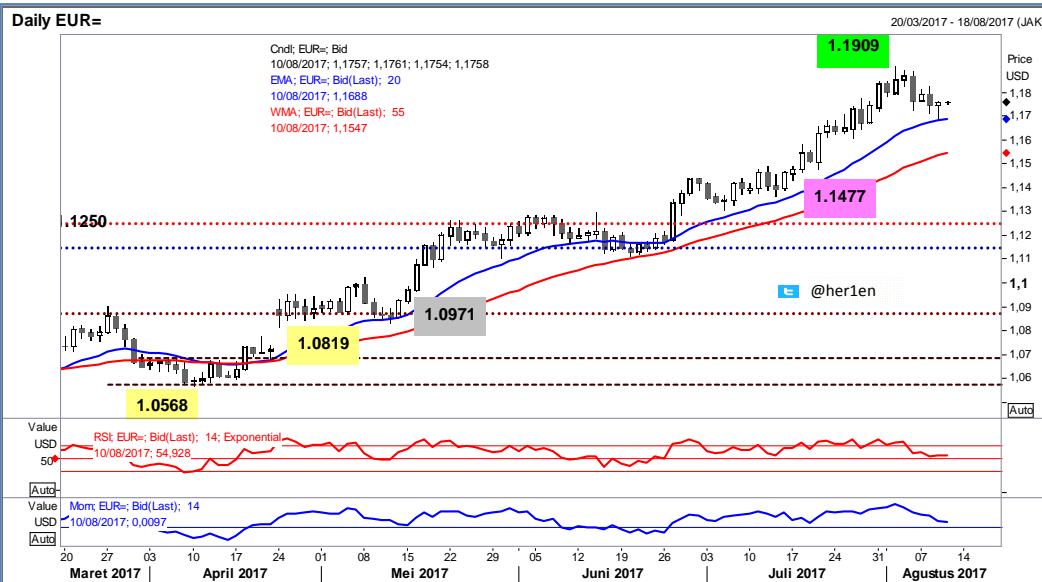


EUR/USD

Interest Rate: 0.00% (EU)/ 1.00%-1.25% (US)



- *Support* utama di level 1.1610
- RSI harian *flat*
- *Resistance* kuat di 1.2110
[\[Research - @her1en\]](#)

DATE	OPEN	HIGH	LOW	RANGE	CLOSE	CHANGE	PREVIOUS
Aug 09	1.17486	1.17627	1.16877	75,0	1.17559	↑ 6,0	1.17499
Aug 08	1.17941	1.18228	1.17140	108,8	1.17499	↓ 43,3	1.17932
Aug 07	1.17850	1.18129	1.17755	37,4	1.17932	↑ 27,9	1.17653
Aug 04	1.18692	1.18879	1.17269	161,0	1.17653	↓ 102,7	1.18680
Aug 03	1.18538	1.18919	1.18293	62,6	1.18680	↑ 14,0	1.18540

WEEKLY		AUGUST		JULY		2017	
HIGH	LOW	HIGH	LOW	HIGH	LOW	HIGH	LOW
1.18228 (08/Aug)	1.16877 (09/Aug)	1.19091 (02/Aug)	1.16877 (09/Aug)	1.18444 (31/Jul)	1.13112 (05/Jul)	1.19091 (02/Aug)	1.0342 (03/Jan)

ANALYSIS & RECOMMENDATION

RESISTANCE	1.2108	High Jan 02, 2015
	1.1968	High Jan 06, 2015
	1.1889	High Aug 04
	1.1824	High Aug 08
SUPPORT	1.1713	Low Aug 08
	1.1669	Low Jul 28
	1.1611	Low Jul 26
	1.1477	Low Jul 20
RECOMMENDATION	BUY	-----
	SELL	1.1765
	STOP LOSS	1.1830
	TARGET	1.1695 1.1665

Laporan dibuat untuk tujuan informatif & dapat dijadikan bahan perbandingan atas prediksi lain namun tidak harus menjadi satu-satunya referensi dalam pengambilan keputusan untuk masuk pasar. Dengan demikian, segala sesuatu yang menyangkut akibat dari transaksi yang dilakukan nasabah, sepenuhnya menjadi tanggung jawab nasabah.

AUD/USD

Interest Rate: 1.5% (AU)/ 1.00%-1.25% (US)



- Dengan *trendline resistance* di sekitar 0.8230
- Area *support* di sekitar 0.7720 - 0.7630
[\(Research - @her1en\)](#)

DATE	OPEN	HIGH	LOW	RANGE	CLOSE	CHANGE	PREVIOUS
Aug 09	0.79117	0.79134	0.78541	59,3	0.78849	↓ 24,1	0.79090
Aug 08	0.79119	0.79417	0.78858	55,9	0.79090	↑ 2,5	0.79065
Aug 07	0.79321	0.79475	0.78979	49,6	0.79065	↓ 16,7	0.79232
Aug 04	0.79500	0.79783	0.78901	88,2	0.79232	↓ 22,7	0.79459
Aug 03	0.79642	0.79647	0.79127	52,0	0.79459	↓ 19,5	0.79654

WEEKLY		AUGUST		JULY		2017	
HIGH	LOW	HIGH	LOW	HIGH	LOW	HIGH	LOW
0.79475 (07/Aug)	0.78541 (09/Aug)	0.80416 (01/Aug)	0.78541 (09/Aug)	0.80646 (27/Jul)	0.75698 (05/Jul)	0.80646 (27/Jul)	0.7182 (03/Jan)

ANALYSIS & RECOMMENDATION

RESISTANCE	0.8233	High Jan 21, 2015
	0.8162	High May 14, 2015
	0.8065	High July 27
	0.7992	High Aug 02
SUPPORT	0.7852	Low Aug 09
	0.7783	Low July 18
	0.7721	Low July 14
	0.7630	Low July 12
RECOMMENDATION	BUY	-----
	SELL	0.7910
	STOP LOSS	0.7975
	TARGET	0.7840
		0.7810

Laporan dibuat untuk tujuan informatif & dapat dijadikan bahan perbandingan atas prediksi lain namun tidak harus menjadi satu-satunya referensi dalam pengambilan keputusan untuk masuk pasar. Dengan demikian, segala sesuatu yang menyangkut akibat dari transaksi yang dilakukan nasabah, sepenuhnya menjadi tanggung jawab nasabah.

NZD/USD

Interest Rate: 1.75% (NZ)/ 1.00%-1.25% (US)



- Rangkaian turun level *high* dalam harian
- Dengan RSI harian yang turun ([Research - @her1en](#))

DATE	OPEN	HIGH	LOW	RANGE	CLOSE	CHANGE	PREVIOUS
Aug 09	0.73276	0.73428	0.73072	35,6	0.73392	↑ 11,5	0.73277
Aug 08	0.73591	0.73687	0.73170	51,7	0.73277	↓ 34,7	0.73624
Aug 07	0.74123	0.74155	0.73468	68,7	0.73624	↓ 49,5	0.74119
Aug 04	0.74361	0.74536	0.73916	62,0	0.74119	↓ 21,8	0.74337
Aug 03	0.74274	0.74500	0.73898	60,2	0.74337	↑ 4,3	0.74294

WEEKLY		AUGUST		JULY		2017	
HIGH	LOW	HIGH	LOW	HIGH	LOW	HIGH	LOW
0.74155 (07/Aug)	0.73072 (09/Aug)	0.75239 (01/Aug)	0.73072 (09/Aug)	0.75570 (27/Jul)	0.72005 (11/Jul)	0.75570 (27/Jul)	0.68166 (11/May)

ANALYSIS & RECOMMENDATION

RESISTANCE	0.7627	High May 01, 2015
	0.7562	High May 14, 2015
	0.7473	High Aug 02
	0.7454	High Aug 04
SUPPORT	0.7244	Low July 13
	0.7200	Low July 11
	0.7112	Low June 05
	0.7054	Low June 01
RECOMMENDATION	BUY	-----
	SELL	0.7370
	STOP LOSS	0.7430
	TARGET	0.7300 0.7270