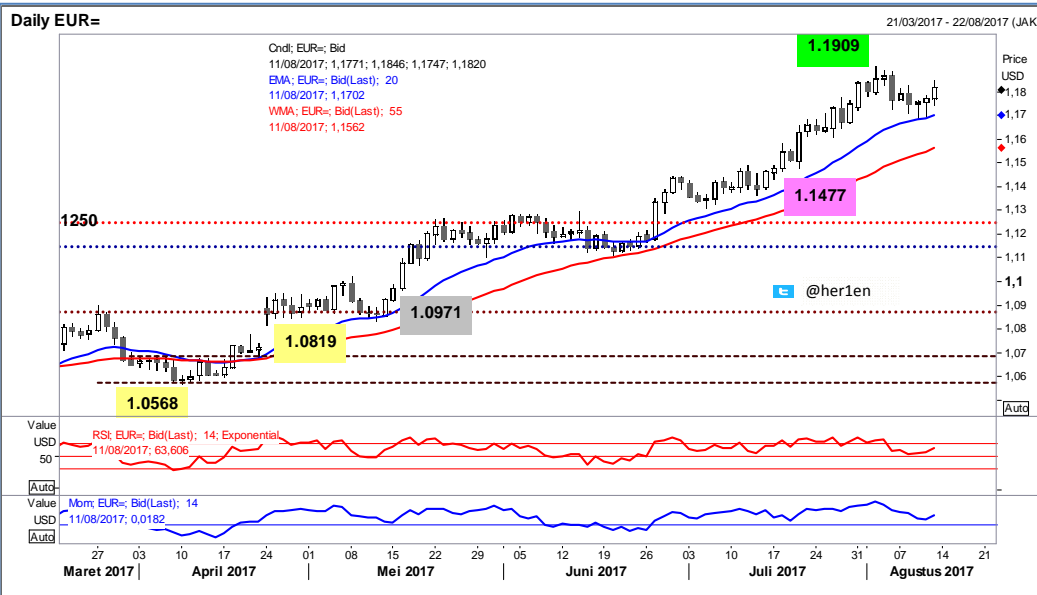


## EUR/USD

Interest Rate: 0.00% (EU)/ 1.00%-1.25% (US)



- *Support* utama di level 1.1610
- RSI harian naik
- *Resistance* kuat di 1.2110  
[\[Research - @her1en\]](#)

DATE	OPEN	HIGH	LOW	RANGE	CLOSE	CHANGE	PREVIOUS
Aug 11	1.17707	1.18460	1.17474	98,6	1.18226	↑ 52,6	1.17700
Aug 10	1.17584	1.17842	1.17029	81,3	1.17700	↑ 14,1	1.17559
Aug 09	1.17486	1.17627	1.16877	75,0	1.17559	↑ 6,0	1.17499
Aug 08	1.17941	1.18228	1.17140	108,8	1.17499	↓ 43,3	1.17932
Aug 07	1.17850	1.18129	1.17755	37,4	1.17932	↑ 27,9	1.17653

WEEKLY		AUGUST		JULY		2017	
HIGH	LOW	HIGH	LOW	HIGH	LOW	HIGH	LOW
1.18460 (11/Aug)	1.16877 (09/Aug)	1.19091 (02/Aug)	1.16877 (09/Aug)	1.18444 (31/Jul)	1.13112 (05/Jul)	1.19091 (02/Aug)	1.0342 (03/Jan)

### ANALYSIS & RECOMMENDATION

RESISTANCE	1.2254	(Reaction high) High Dec 25, 2014
	1.2108	High Jan 02, 2015
	1.1968	High Jan 06, 2015
	1.1889	High Aug 04
SUPPORT	1.1747	Low Aug 11
	1.1702	Low Aug 10
	1.1669	Low Jul 28
	1.1611	Low Jul 26
RECOMMENDATION	BUY	1.1800
	SELL	-----
	STOP LOSS	1.1725
	TARGET	1.1880 1.1910

Laporan dibuat untuk tujuan informatif & dapat dijadikan bahan perbandingan atas prediksi lain namun tidak harus menjadi satu-satunya referensi dalam pengambilan keputusan untuk masuk pasar. Dengan demikian, segala sesuatu yang menyangkut akibat dari transaksi yang dilakukan nasabah, sepenuhnya menjadi tanggung jawab nasabah.

## AUD/USD

Interest Rate: 1.5% (AU)/ 1.00%-1.25% (US)



- Dengan *trendline resistance* di sekitar 0.8230
- Area *support* di sekitar 0.7720 - 0.7630  
[\(Research - @her1en\)](#)

DATE	OPEN	HIGH	LOW	RANGE	CLOSE	CHANGE	PREVIOUS
Aug 11	0.78703	0.79083	0.78378	70,5	0.78965	↑ 27,2	0.78693
Aug 10	0.78858	0.79096	0.78655	44,1	0.78693	↓ 15,6	0.78849
Aug 09	0.79117	0.79134	0.78541	59,3	0.78849	↓ 24,1	0.79090
Aug 08	0.79119	0.79417	0.78858	55,9	0.79090	↑ 2,5	0.79065
Aug 07	0.79321	0.79475	0.78979	49,6	0.79065	↓ 16,7	0.79232

WEEKLY		AUGUST		JULY		2017	
HIGH	LOW	HIGH	LOW	HIGH	LOW	HIGH	LOW
0.79475 (07/Aug)	0.78378 (11/Aug)	0.80416 (01/Aug)	0.78378 (11/Aug)	0.80646 (27/Jul)	0.75698 (05/Jul)	0.80646 (27/Jul)	0.7182 (03/Jan)

### ANALYSIS & RECOMMENDATION

RESISTANCE	0.8233	High Jan 21, 2015
	0.8162	High May 14, 2015
	0.8065	High July 27
	0.7992	High Aug 02
SUPPORT	0.7836	Low Aug 10
	0.7783	Low July 18
	0.7721	Low July 14
	0.7630	Low July 12
RECOMMENDATION	BUY	-----
	SELL	0.7905
	STOP LOSS	0.7970
	TARGET	0.7835
		0.7805

Laporan dibuat untuk tujuan informatif & dapat dijadikan bahan perbandingan atas prediksi lain namun tidak harus menjadi satu-satunya referensi dalam pengambilan keputusan untuk masuk pasar. Dengan demikian, segala sesuatu yang menyangkut akibat dari transaksi yang dilakukan nasabah, sepenuhnya menjadi tanggung jawab nasabah.

**NZD/USD**

Interest Rate: 1.75% (NZ)/ 1.00%-1.25% (US)



- Rangkaian turun level low dalam harian
- Dengan RSI harian yang naik  
[\[Research - @her1en\]](#)

DATE	OPEN	HIGH	LOW	RANGE	CLOSE	CHANGE	PREVIOUS
Aug 11	0.72665	0.73266	0.72511	75,5	0.73208	↑ 43,2	0.72776
Aug 10	0.73520	0.73671	0.72507	116,4	0.72776	↓ 61,6	0.73392
Aug 09	0.73276	0.73428	0.73072	35,6	0.73392	↑ 11,5	0.73277
Aug 08	0.73591	0.73687	0.73170	51,7	0.73277	↓ 34,7	0.73624
Aug 07	0.74123	0.74155	0.73468	68,7	0.73624	↓ 49,5	0.74119

WEEKLY		AUGUST		JULY		2017	
HIGH	LOW	HIGH	LOW	HIGH	LOW	HIGH	LOW
0.74155 (07/Aug)	0.72507 (10/Aug)	0.75239 (01/Aug)	0.72507 (10/Aug)	0.75570 (27/Jul)	0.72005 (11/Jul)	0.75570 (27/Jul)	0.68166 (11/May)

**ANALYSIS & RECOMMENDATION**

RESISTANCE	0.7627	High May 01, 2015
	0.7562	High May 14, 2015
	0.7473	High Aug 02
	0.7454	High Aug 04
SUPPORT	0.7244	Low July 13
	0.7200	Low July 11
	0.7112	Low June 05
	0.7054	Low June 01
RECOMMENDATION	BUY	-----
	SELL	0.7325
	STOP LOSS	0.7390
	TARGET	0.7255
		0.7225