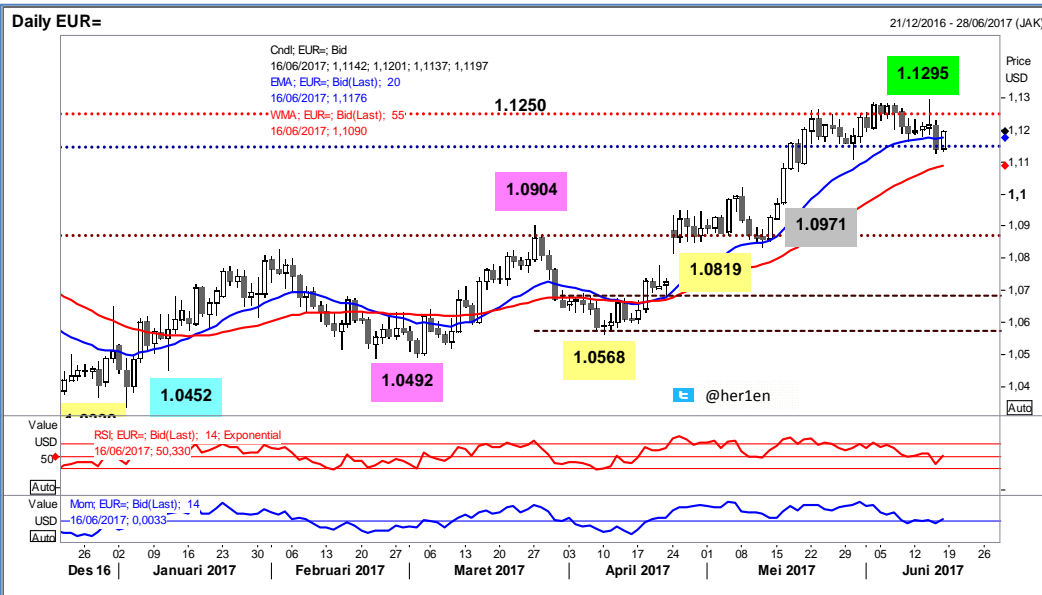


EUR/USD

Interest Rate: 0.00% (EU)/ 1.00%-1.25% (US)



- RSI harian naik
- Dengan *resistance* di 1.1430
- *Support* di level 1.0970
[\(Research - @her1en\)](#)

DATE	OPEN	HIGH	LOW	RANGE	CLOSE	CHANGE	PREVIOUS
June 16	1.11449	1.11987	1.11372	61,5	1.11933	↑ 50,3	1.11430
June 15	1.12160	1.12275	1.11308	96,7	1.11430	↓ 73,7	1.12167
June 14	1.12067	1.12946	1.11920	102,6	1.12167	↑ 10,3	1.12064
June 13	1.12041	1.12238	1.11841	39,7	1.12064	↑ 5,3	1.12011
June 12	1.12025	1.12310	1.11907	40,3	1.12011	↑ 5,9	1.11952

WEEKLY		JUNE		MAY		2017	
HIGH	LOW	HIGH	LOW	HIGH	LOW	HIGH	LOW
1.12946 (14/Jun)	1.11308 (15/Jun)	1.12946 (14/Jun)	1.11308 (15/Jun)	1.12671 (23/May)	1.08379 (11/May)	1.12946 (14/Jun)	1.0342 (03/Jan)

ANALYSIS & RECOMMENDATION

RESISTANCE	1.1432	High June 24, 2016
	1.1365	Reaction high on 1-H chart
	1.1299	High 09/Nov/2016
	1.1229	High June 15
SUPPORT	1.1108	Low May 30
	1.0971	Low May 16
	1.0854	Low May 12
	1.0819	Low Apr 24
RECOMMENDATION	BUY	1.1175
	SELL	-----
	STOP LOSS	1.1110
	TARGET	1.1245 1.1275

Laporan dibuat untuk tujuan informatif & dapat dijadikan bahan perbandingan atas prediksi lain namun tidak harus menjadi satu-satunya referensi dalam pengambilan keputusan untuk masuk pasar. Dengan demikian, segala sesuatu yang menyangkut akibat dari transaksi yang dilakukan nasabah, sepenuhnya menjadi tanggung jawab nasabah.

AUD/USD

Interest Rate: 1.5% (AU)/ 1.00%-1.25% (US)



- RSI harian naik
 - Upperline di sekitar 0.7835, sedangkan lowerline di 0.7370
- [\(Research - @her1en\)](#)

DATE	OPEN	HIGH	LOW	RANGE	CLOSE	CHANGE	PREVIOUS
June 16	0.75784	0.76287	0.75750	53,7	0.76248	↑ 48,3	0.75765
June 15	0.75848	0.76304	0.75672	63,2	0.75765	↓ 9,5	0.75860
June 14	0.75331	0.76343	0.75313	103,0	0.75860	↑ 50,0	0.75360
June 13	0.75387	0.75636	0.75230	40,6	0.75360	↓ 2,0	0.75380
June 12	0.75285	0.75485	0.75205	28,0	0.75380	↑ 9,6	0.75284

WEEKLY		JUNE		MAY		2017	
HIGH	LOW	HIGH	LOW	HIGH	LOW	HIGH	LOW
0.76343 (14/Jun)	0.75205 (12/Jun)	0.76343 (14/Jun)	0.73699 (01/Jun)	0.75549 (02/May)	0.73277 (09/May)	0.7749 (21/Mar)	0.7182 (03/Jan)

ANALYSIS & RECOMMENDATION

RESISTANCE	0.7835	High Apr 21, 2016
	0.7777	Reaction high on 1-H chart
	0.7749	Reaction high on 1-H chart
	0.7679	High Mar 30
SUPPORT	0.7528	Low June 14
	0.7454	Low June 06
	0.7368	Low June 01
	0.7326	Low 09/May/2017
RECOMMENDATION	BUY	0.7595
	SELL	-----
	STOP LOSS	0.7530
	TARGET	0.7665
		0.7695

NZD/USD

Interest Rate: 1.75% (NZ) / 1.00%-1.25% (US)



- Strong support di 0.7055
 - Resistance penting di 0.7560
 - Terlihat *bullish trend channel* mulai tertekan dalam harian
- (Research - @her1en)

DATE	OPEN	HIGH	LOW	RANGE	CLOSE	CHANGE	PREVIOUS
June 16	0.72068	0.72576	0.71987	58,9	0.72547	↑ 51,3	0.72034
June 15	0.72565	0.72648	0.71843	80,5	0.72034	↓ 61,0	0.72644
June 14	0.72125	0.73180	0.71973	120,7	0.72644	↑ 45,0	0.72194
June 13	0.71907	0.72263	0.71905	35,8	0.72194	↑ 25,0	0.71944
June 12	0.72026	0.72120	0.71697	42,3	0.71944	↓ 13,4	0.72078

WEEKLY		JUNE		MAY		2017	
HIGH	LOW	HIGH	LOW	HIGH	LOW	HIGH	LOW
0.73180 (14/Jun)	0.71697 (12/Jun)	0.73180 (14/Jun)	0.70572 (01/Jun)	0.71209 (31/May)	0.68166 (11/May)	0.7374 (07/Feb)	0.68166 (11/May)

ANALYSIS & RECOMMENDATION

RESISTANCE	0.7562	High May 14, 2015
	0.7485	High Sept 07, 2016
	0.7402	High Nov 08, 2016
	0.7333	High Feb 08
SUPPORT	0.7183	Low June 15
	0.7112	Low June 05
	0.7055	Low June 02
	0.7005	Low May 26
RECOMMENDATION	BUY	0.7225
	SELL	-----
	STOP LOSS	0.7160
	TARGET	0.7295
		0.7325