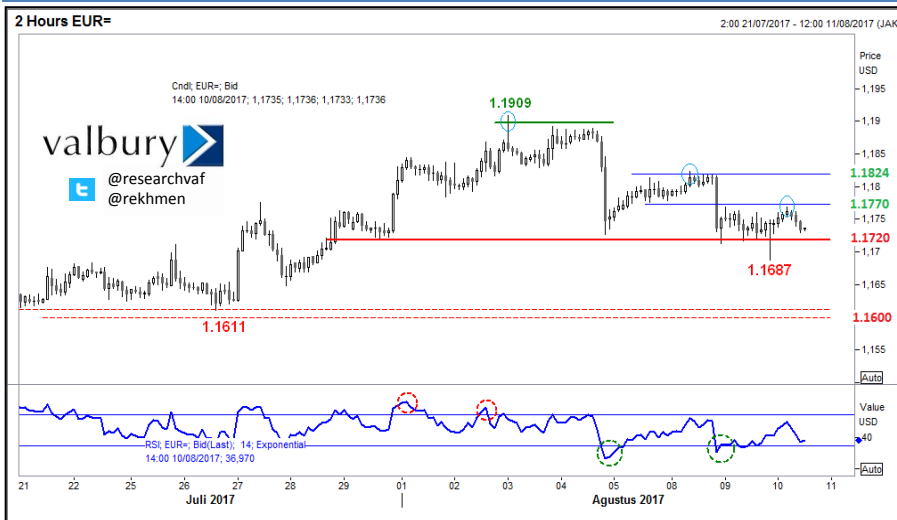


INTRADAY CHART & INDICATORS (2H) – Update 12.02 WIB



<b>RESISTANCE</b>	1.1900/09
	1.1824
	1.1770
<b>SUPPORT</b>	1.1720
	1.1687
	1.1600/11
<b>RSI-14 (Daily)</b>	51.10
<b>Chart Pattern 2H</b>	----
<b>Trend (2H)</b>	➔

**EURUSD**  
Reuters Graphics

PRICE RANGE UPDATE (Reuters Graphics)

OPEN	HIGH	LOW	RANGE	ATR-14 (Daily)	Running Quote
1.1735	1.1769	1.1730	0.0039	0.0090	1.1736

INTRADAY CHART & INDICATORS (1H) – Update 12.05 WIB



<b>RESISTANCE</b>	0.9772/80 (30/5)
	0.9710
	0.9670
<b>SUPPORT</b>	0.9640
	0.9600
	0.9480
<b>RSI-14 (Daily)</b>	49.50
<b>Chart Pattern 1H</b>	----
<b>Trend (1H)</b>	➔

**USDCHF**  
Reuters Graphics

PRICE RANGE UPDATE (Reuters Graphics)

OPEN	HIGH	LOW	RANGE	ATR-14 (Daily)	Running Quote
0.9635	0.9658	0.9628	0.0030	0.0077	0.9651