

INTRADAY CHART & INDICATORS (2H) – Update 15.06 WIB

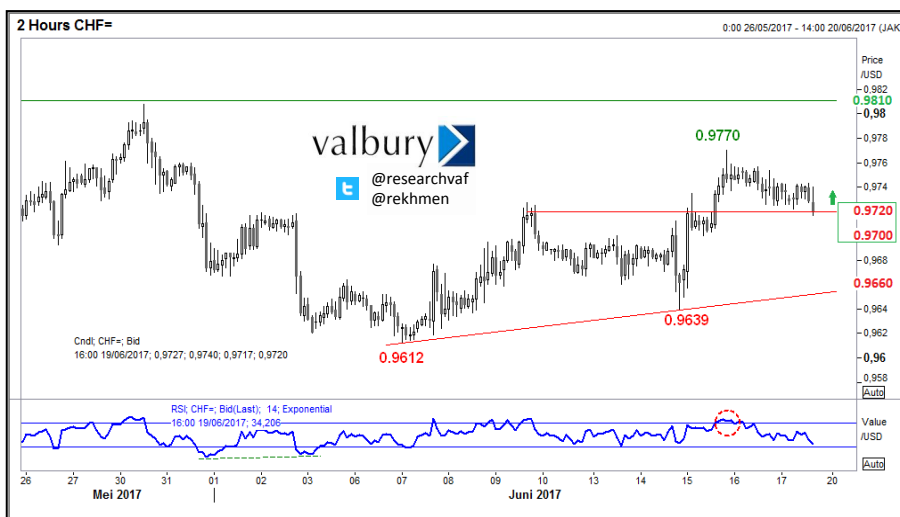


RESISTANCE	1.1280/95
	1.1235
	1.1212
SUPPORT	1.1185
	1.1155
	1.1130
RSI-14 (Daily)	48.40
Chart Pattern 2H	----
Trend (2H)	↓
EURUSD Reuters Graphics	

PRICE RANGE UPDATE (Reuters Graphics)

OPEN	HIGH	LOW	RANGE	ATR-14 (Daily)	Running Quote
1.1198	1.1212	1.1181	0.0031	0.0070	1.1193

INTRADAY CHART & INDICATORS (2H) – Update 15.07 WIB



RESISTANCE	0.9810
	0.9770
	0.9745
SUPPORT	0.9720
	0.9700
	0.9640
RSI-14 (Daily)	52.60
Chart Pattern 2H	----
Trend (2H)	↑
USDCHF Reuters Graphics	

PRICE RANGE UPDATE (Reuters Graphics)

OPEN	HIGH	LOW	RANGE	ATR-14 (Daily)	Running Quote
0.9730	0.9743	0.9717	0.0026	0.0058	0.9720