

USD/JPY

Interest Rate: 1.00%-1.25% (US)/-0.1% (JP)



- Rebound berkembang setelah support krusial di 108.11 efektif
- Rebound hadapi area resistance di 109.90 – 110.66

[\(Research – @ErwinRiset\)](#)

DATE	OPEN	HIGH	LOW	RANGE	CLOSE	CHANGE	PREVIOUS
Sep 11	108.338	109.494	108.153	134,1	109.370	↑ 157,3	107.797
Sep 08	108.376	108.474	107.307	116,7	107.797	↓ 62,5	108.422
Sep 07	109.228	109.251	108.036	121,5	108.422	↓ 79,0	109.212
Sep 06	108.719	109.385	108.439	94,6	109.212	↑ 42,3	108.789
Sep 05	109.655	109.822	108.620	120,2	108.789	↓ 87,7	109.666

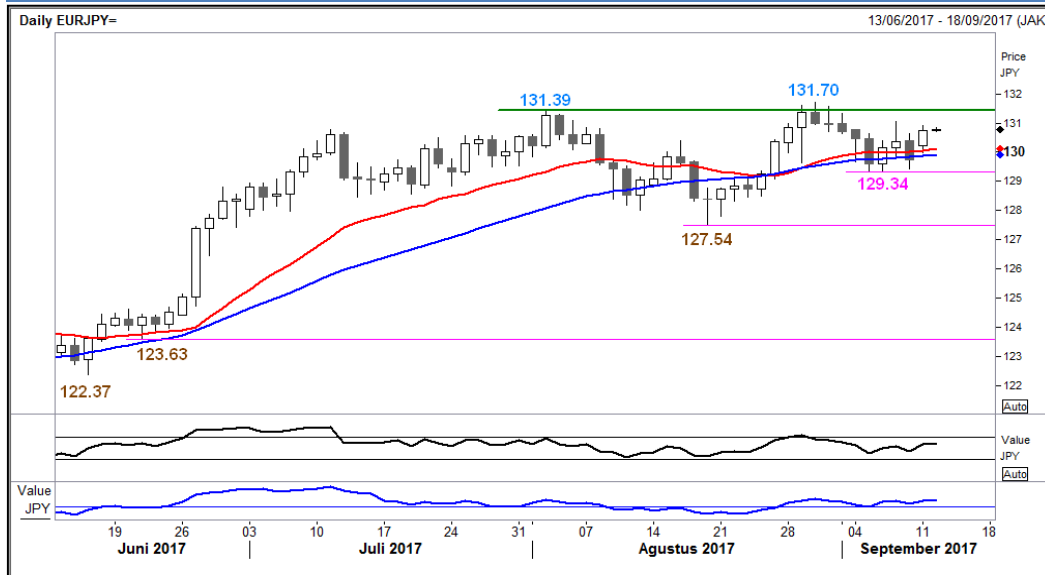
WEEKLY		SEPTEMBER		AUGUST		2017	
HIGH	LOW	HIGH	LOW	HIGH	LOW	HIGH	LOW
109.494 (11/Sep)	108.153 (11/Sep)	110.488 (01/Sep)	107.307 (08/Sep)	111.038 (04/Aug)	108.256 (29/Aug)	118.60 (03/Jan)	107.307 (08/Sep)

ANALYSIS & RECOMMENDATION

RESISTANCE	111.70	High 27/Jul/2017
	111.04	High 04/Aug/2017 (Reaction high)
	110.66	High 31/Aug/2017 (Reaction high)
	109.92	Reaction high (hourly)
SUPPORT	108.12	Low 11/Sep/2017
	107.31	Low 08/Sep/2017
	106.51	Low 14/Nov/2016
	106.00	Low 11/Nov/2016
RECOMMENDATION	BUY	109.00
	SELL	----
	STOP LOSS	108.10
	TARGET	109.75
		110.15

EUR/JPY

Interest Rate: 0.00% (EU)/-0.1% (JP)



- Bergerak fluktuatif, dengan rebound berkembang hadapi area resistance di 131.70
 - Sedangkan area support saat ini berada di 129.34
- [\[Research – @ErwinRiset\]](#)

DATE	OPEN	HIGH	LOW	RANGE	CLOSE	CHANGE	PREVIOUS
Sep 11	130.194	130.879	129.957	92,2	130.726	↑ 110,0	129.626
Sep 08	130.248	130.636	129.439	119,7	129.626	↓ 72,2	130.348
Sep 07	130.210	131.064	129.883	118,1	130.348	↑ 19,5	130.153
Sep 06	129.496	130.368	129.340	102,8	130.153	↑ 45,8	129.695
Sep 05	130.458	130.610	129.355	125,5	129.695	↓ 73,4	130.429

WEEKLY		SEPTEMBER		AUGUST		2017	
HIGH	LOW	HIGH	LOW	HIGH	LOW	HIGH	LOW
130.879	129.957	131.315	129.340	131.678	127.532	131.678	114.87
(11/Sep)	(11/Sep)	(01/Sep)	(06/Sep)	(30/Aug)	(18/Aug)	(30/Aug)	(17/Apr)

ANALYSIS & RECOMMENDATION

RESISTANCE	132.80	High 22/Dec/2015 (Reaction high)
	132.25	High 29/Jan/2016 (Peak)
	131.70	High 30/Aug/2017
	131.07	High 07/Sep/2017
SUPPORT	129.34	Low 06/Sep/2017 (Reaction low)
	129.09	Low 25/Aug/2017
	127.82	Low 21/Aug/2017
	127.42	Low 06/Jul/2017 (Reaction low)
RECOMMENDATION	BUY	130.20
	SELL	----
	STOP LOSS	129.30
	TARGET	131.10
		131.55